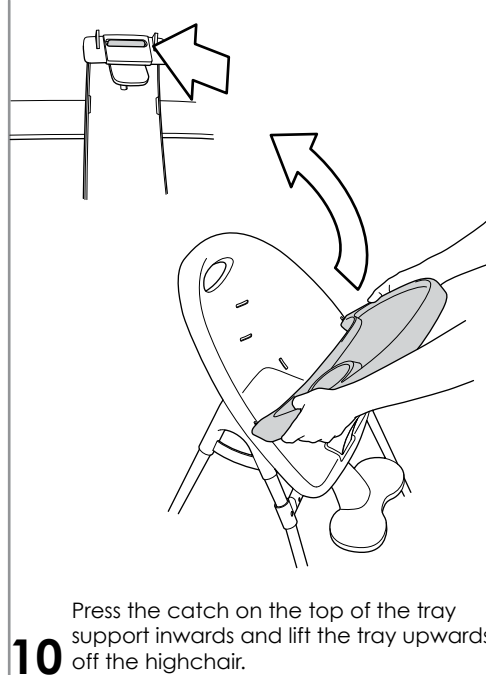
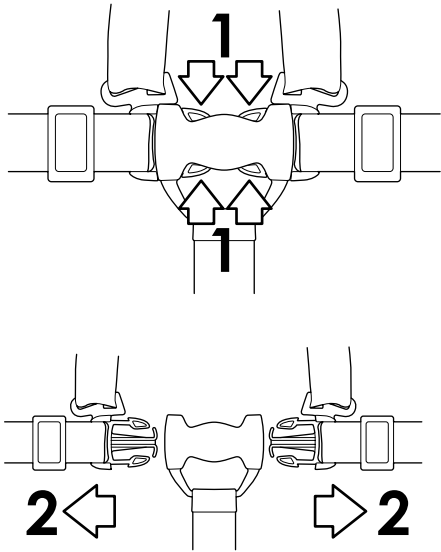


bop highchair

- 9 To open the harness, push the locking tabs inwards (1) and slide the two waist strap tabs out of the buckle (2).



INSTRUCTIONS FOR SAFE USE & MAINTENANCE

IMPORTANT! KEEP FOR FUTURE REFERENCE

- **WARNING:** Do not leave the child unattended.
- **WARNING:** Ensure that the harness is correctly fitted and adjusted when the child is in the highchair.
- **WARNING:** Do not use the high chair unless all components are correctly fitted and adjusted.
- **WARNING:** Be aware of the risk of open fire and other sources of strong heat, such as electric bar fires, gas fires etc. in the vicinity of the high chair.
- **IMPORTANT:** Ensure the tray is secured in position at all times when the child is in the highchair
- This highchair is only suitable for children who can sit up unaided.
- Do not to use the high chair if any part is broken, torn or missing.
- The highchair can be cleaned using warm water and a mild soap. Never use bleach or abrasive cleaners.
- The highchair is suitable from 6 months to 3 years.

Due to constant updates and improvements some components/fitings may differ slightly from the diagrams in these instructions. We reserve the right to change the specification of any product without prior notice.

Mamas & Papas Ltd, HD5 0RH, UK
mamasandpapas.com

+44 (0)845 268 2000

1300 663 034

1-800-490-0331

1-800-667-4111



/mamasandpapasuk
/mamasandpapasusa
/mamasandpapasmltaregion
/mamasandpapasmagyarorszag



@mamasandpapas



/user/mamasandpapasglobal

mamas
& papas®



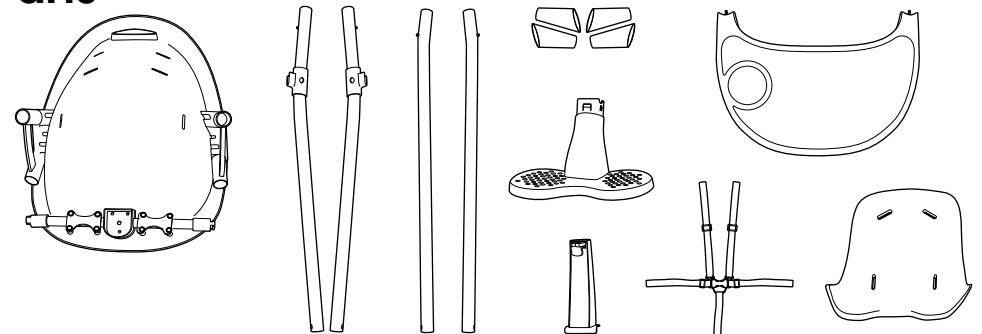
bop highchair

BPHC_0102_0113_V4

IMPORTANT: READ CAREFULLY AND RETAIN FOR FUTURE REFERENCE

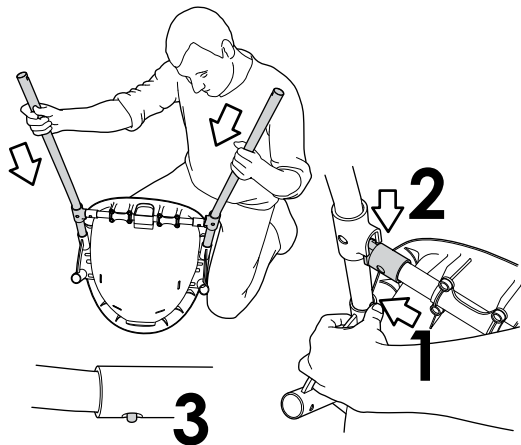
- Do not discard any packaging until you have all the components and fittings.
- Read the instructions before constructing the product then follow them step by step.
- You may find the construction of your product easier with the help of another person.

Parts

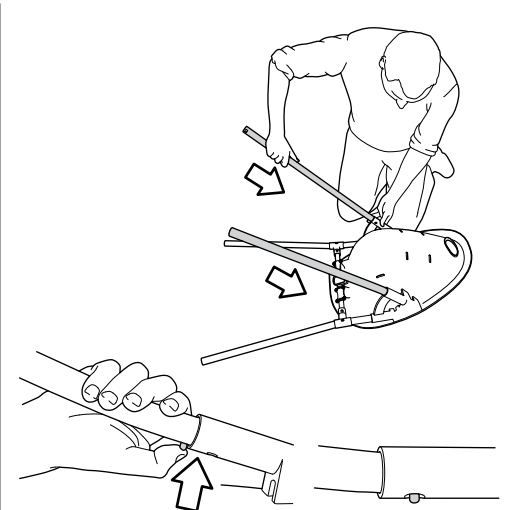
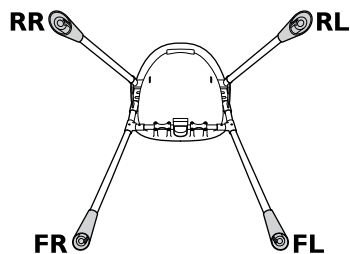
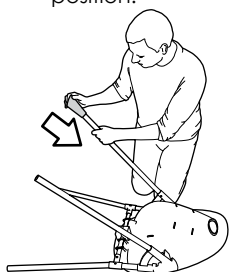


bop highchair

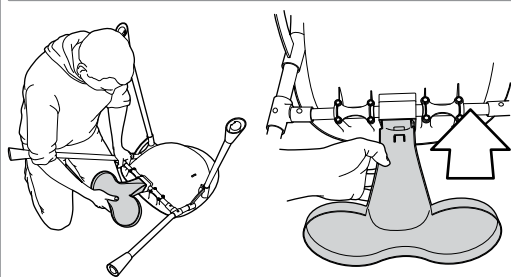
- 1** Attach the two front legs to the seat. Slot the ends of the legs into the housings on the seat. Push the pins in the tops of the legs in and slide into the housings (1), ensure the ends of bar on the seat insert into the housings on the legs (2). Ensure the pins are protruding through the holes in the housings after fitting (3).



- 3** Slot the feet onto the ends of the legs. Ensure the feet are slotted onto the correct legs. The base of the feet are marked with two letters, see diagram for the correct position.

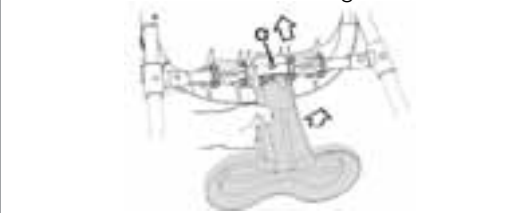


- 2** Slot the two back legs into the rear housing on the seat. Push the pins on the legs inwards and fully insert into the housing. Ensure the pins are protruding through the holes in the housings after fitting.



ASSEMBLY:

- 4** Slot the end of the foot rest into the housing on the underside of the seat. Push the leg rest in until it locks into the housing.

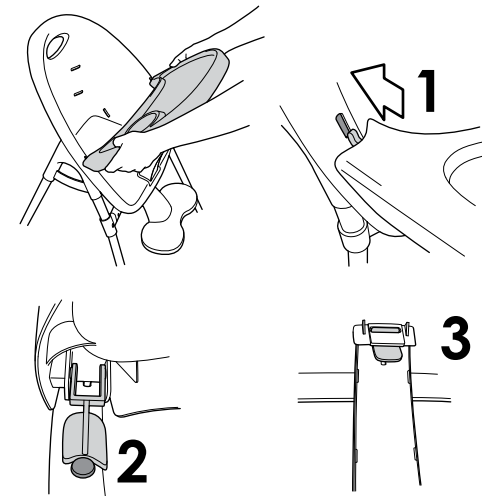
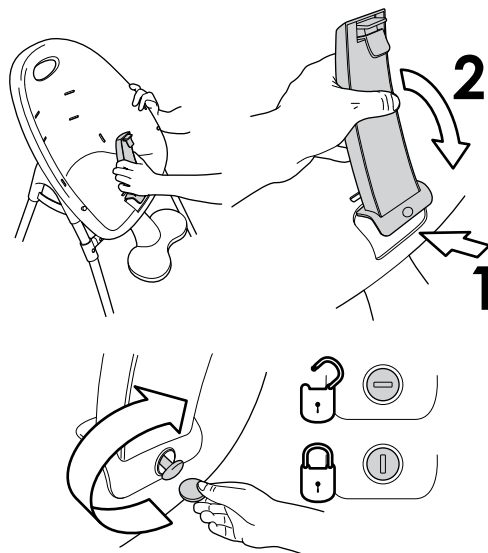


DISASSEMBLY:

- Push pin 'a' towards the footrest to release the lock and pull the footrest out of the housing.

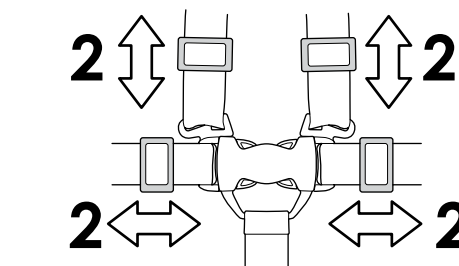
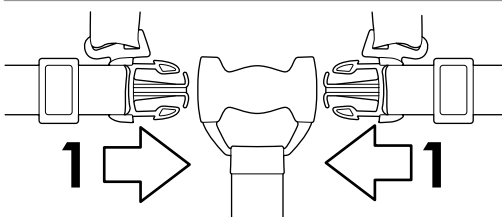
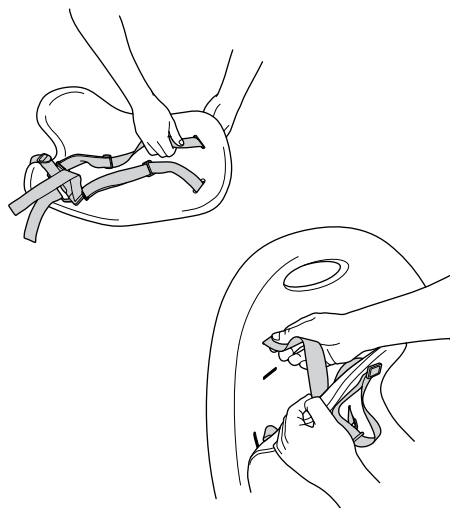
bop highchair

- 5** Attach the tray support to the front of the seat. Slot the tabs on the back of the support into slots in the seat (1). Rotate the support down until the front locks onto the seat (2).



- 6** Slot the hooks on the ends of the tray into the slots in the sides of the seat (1). Ensure the feet on the ends of the tray are resting on the buttons on seat under the tray (2). Push the tray down until it locks onto the tray support (3).

- 7** Slot the buckles on the ends of the harness straps through the slots in the seat pad. Place the seat pad in the seat and slot the buckles through the slots in the seat.



- 8** Slot the tabs on the waist straps into the buckle (1). To adjust the harness, slide the straps through the adjusters to the required lengths (2).